

NSDL STP Utility Set-up for Client Maintenance Module

PREREQUISITES:

Applicable for Local DPM System Version 6.80 and above.

STEP 1:

Download STP Utility Set Up

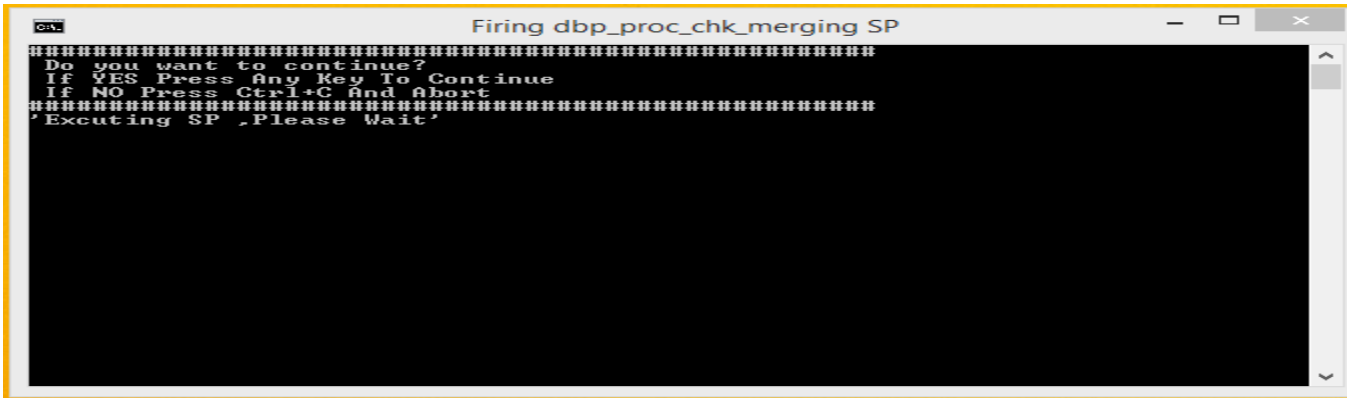
Download the Setup from i-assist to Local DPM Server. It can be saved on any drive.

STEP 2:

Installation of STP Utility Store Procedures:

1. Unzip the **STP_UTILITY.zip** file.
2. Open the folder, it will contain following two folders
 - i) ServerSetup
 - ii) STP_SPs
3. In a "**STP_SPs**" folder, run "**Double_Click.bat**" file. On execution, a command window will appear.

Name	Date modified	Type	Size
out	22-11-2018 21:01	File folder	
crt_on_db_nsdldpm	05-01-2012 23:32	Windows Batch File	1 KB
dbp_bkf crt_clnt_instr_STP	12-11-2018 20:10	Microsoft SQL Ser...	727 KB
dbp_bkf crt_clnt_mstr_stp	12-11-2018 20:17	Microsoft SQL Ser...	357 KB
dbp_get_dpm_version	28-09-2018 21:11	Microsoft SQL Ser...	1 KB
Double_Click	07-08-2017 09:35	Windows Batch File	1 KB



4. This will execute all stored procedures on Local DPM Server. On completion, "out" folder will get generated on the same path from where "double_click" batch file is executed.

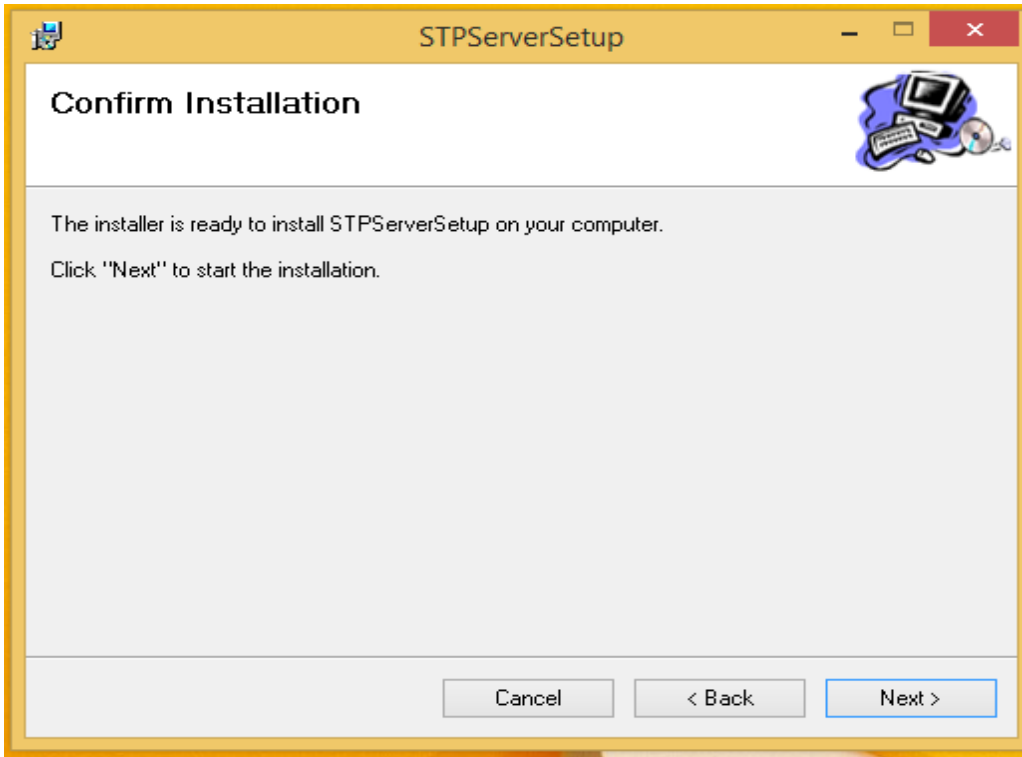
STEP 3:

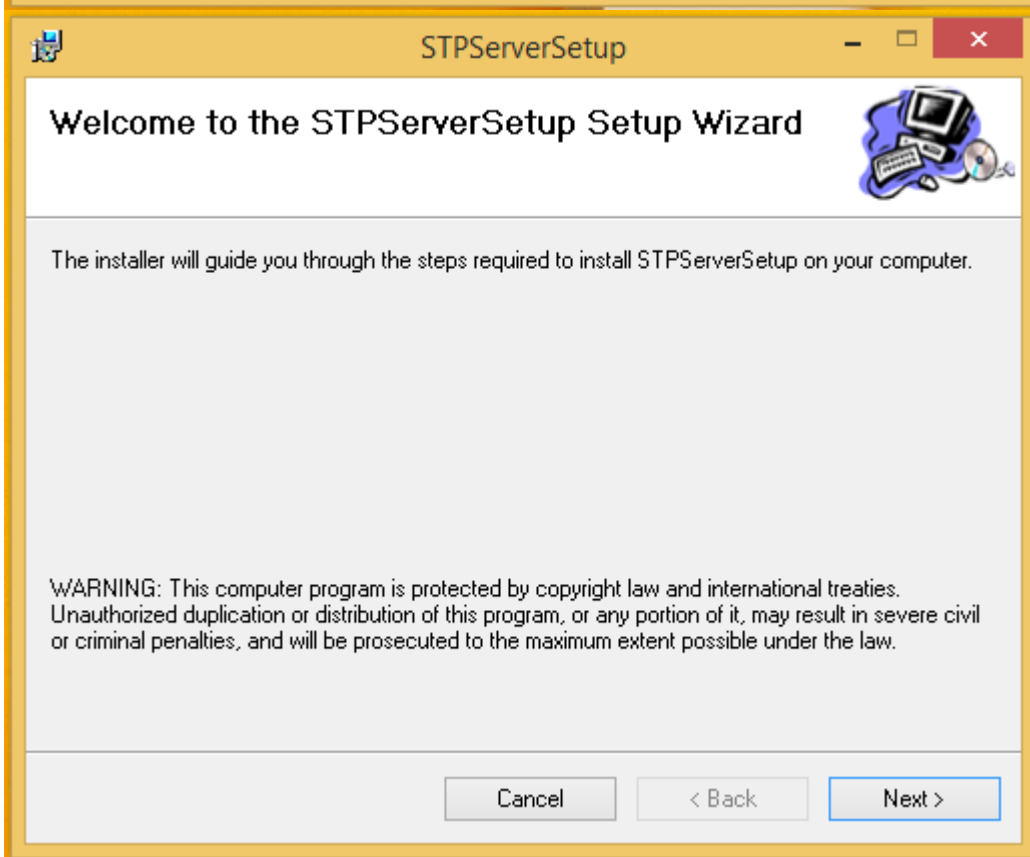
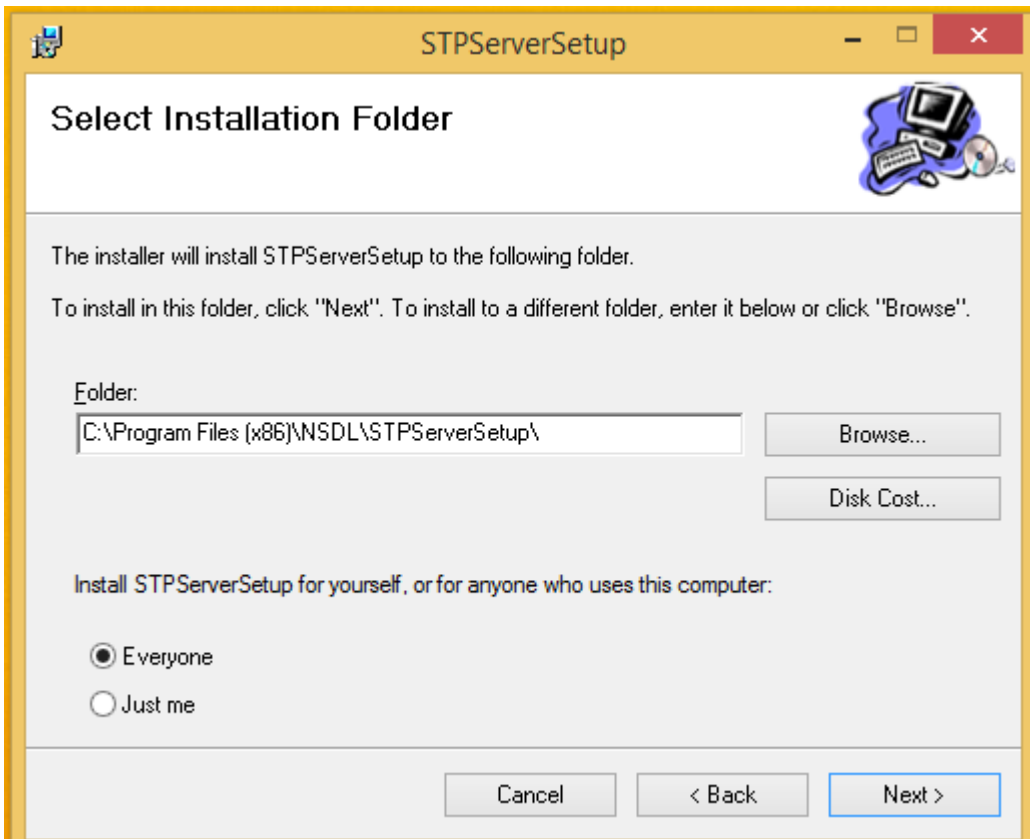
Installation of STP Utility

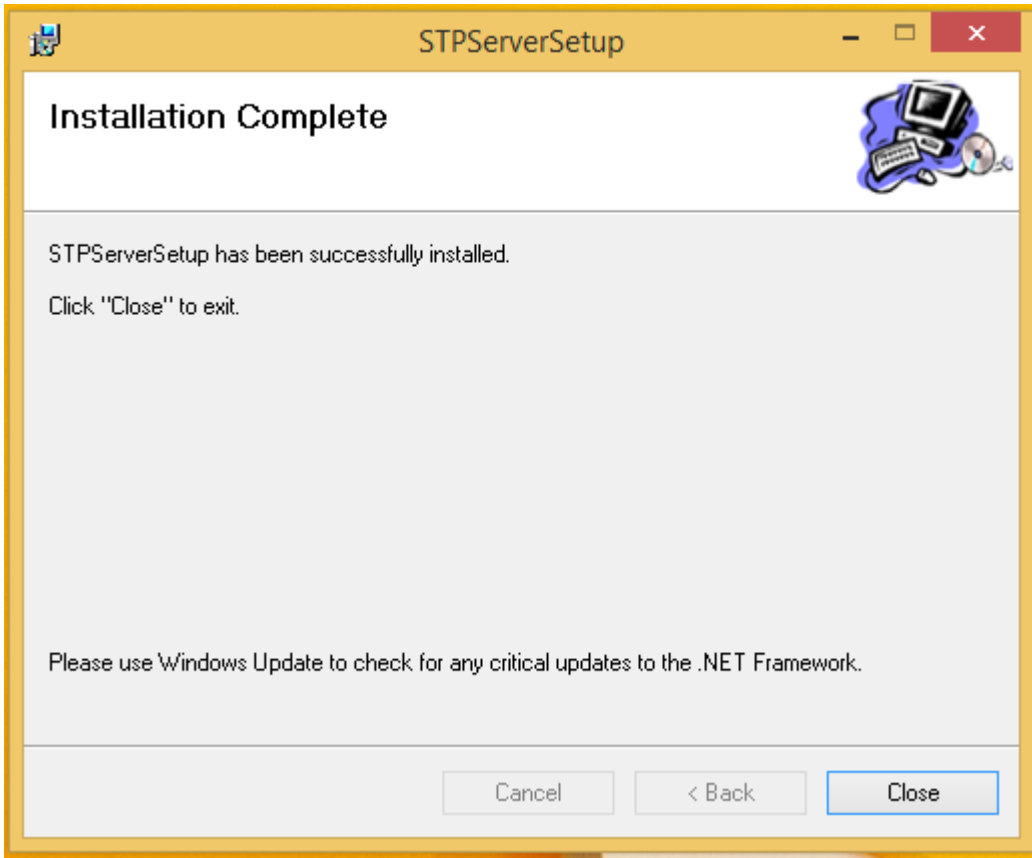
1. From the folder "ServerSetup", double click on the application or setup.exe.

Name	Date modified	Type	Size
setup	13-11-2018 18:55	Application	665 KB
STPServerSetup	13-11-2018 18:55	Windows Installer ...	1,303 KB

3. On execution, it would display following screens.







STEP 4:

Folder Structure in STP

1. After successful installation of STP Utility, at "C:\ClientImages\" a "STPServer" folder will get generated and in "STPServer" folder, following folders will be created.

Name	Date modified	Type
COMPLETED	13-11-2018 18:27	File folder
FAILED	13-11-2018 15:11	File folder
RESPONSE	13-11-2018 18:27	File folder
UPLOADFILES	13-11-2018 18:27	File folder

- i) **UPLOADFILES:** Files to be uploaded in system, i.e. **ClientUpload-1 (Regular), ClientUpload-2 (Pre-Generated Client ID) and Client Modification** should be kept here. All upload files should be in **zip format**.
- ii) **RESPONSE:** After processing the files from **UPLOADFILES**, response files will get generated in ".err" and ".out" files. The file will be in naming conventions as below,
DPID_BatchNo_ExportReqID.out
(IN487875_10000005_4892.out), DPID_BatchNo_ExportReqID.err
(IN487875_10000005_4892.err)







- iii) **FAILED:** STP will move the files here, if not in .zip format or primary file not found in input .zip file. The file will be in renamed form like [DateTime_InputfileName.zip \(20171025111501AM_All Types.zip\)](#)
- iv) **COMPLETED:** After successful processing of the files from **UPLOADFILES** folder, STP will move the files here. The file will be in renamed form like [DateTime_InputfileName.zip\(20171025111501AM_All Types.zip\)](#)

STEP 5:

Checking Logs

1. After completion of STP Server installation, go to "C:\ClientImages" check for "STPLog" file. It will show you log entries like "**STPServer.NSDL_STP_Server.timer1_Elapsed - Timer restart**" at every 1 min. It means Utility is running and continuously polling the UPLOADFILES location for the inputfiles.

ClientImages

Name	Date modified	Type	Size
 STPLog	28-11-2018 15:07	Text Document	6 KB
 STPLog.log.2018-10-23	22-11-2018 19:18	2018-10-23 File	11 KB
 STPLog.log.2018-11-13	13-11-2018 23:38	2018-11-13 File	2 KB
 STPLog.log.2018-11-14	14-11-2018 23:40	2018-11-14 File	9 KB
 STPLog.log.2018-11-15	15-11-2018 17:24	2018-11-15 File	6 KB
 STPLog.log.2018-11-22	22-11-2018 23:31	2018-11-22 File	2 KB

```

2018-10-23 17:37:46,068 INFO [5] STPServer.NSDL_STP_Server.timer1_Elapsed - Timer restart
2018-10-23 17:38:46,077 INFO [6] STPServer.NSDL_STP_Server.timer1_Elapsed - Timer restart
2018-10-23 17:39:46,086 INFO [6] STPServer.NSDL_STP_Server.timer1_Elapsed - Timer restart
2018-10-23 17:40:46,090 INFO [6] STPServer.NSDL_STP_Server.timer1_Elapsed - Timer restart
2018-10-23 17:41:46,095 INFO [5] STPServer.NSDL_STP_Server.timer1_Elapsed - Timer restart
2018-10-23 17:42:46,103 INFO [5] STPServer.NSDL_STP_Server.timer1_Elapsed - Timer restart
2018-10-23 17:43:46,108 INFO [5] STPServer.NSDL_STP_Server.timer1_Elapsed - Timer restart
2018-10-23 17:44:46,118 INFO [5] STPServer.NSDL_STP_Server.timer1_Elapsed - Timer restart
2018-10-23 17:45:46,122 INFO [6] STPServer.NSDL_STP_Server.processFiles - File Start : test.zip
2018-10-23 17:45:46,207 INFO [6] STPServer.NSDL_STP_Server.processFiles - File End : test.zip
2018-10-23 17:45:46,216 INFO [6] STPServer.NSDL_STP_Server.timer1_Elapsed - Timer restart
2018-10-23 17:46:46,221 INFO [6] STPServer.NSDL_STP_Server.timer1_Elapsed - Timer restart
2018-10-23 17:47:46,226 INFO [5] STPServer.NSDL_STP_Server.processFiles - File Start : test2.zip
2018-10-23 17:47:46,446 INFO [5] STPServer.NSDL_STP_Server.processFiles - File End : test2.zip
2018-10-23 17:47:46,455 INFO [5] STPServer.NSDL_STP_Server.timer1_Elapsed - Timer restart
2018-10-23 17:48:46,465 INFO [6] STPServer.NSDL_STP_Server.timer1_Elapsed - Timer restart

```